

# Hampshire Water Transfer and Water Recycling Project Environmental Statement - Figure 15.1 Noise and vibration direct effects study areas, sensitive receptors and monitoring locations

VOLUME NUMBER: 6

PLANNING INSPECTORATE SCHEME NUMBER: WA010002

APPLICATION DOCUMENT REFERENCE: 6.3

APFP REGULATION: 5(2)(a)

May 2026

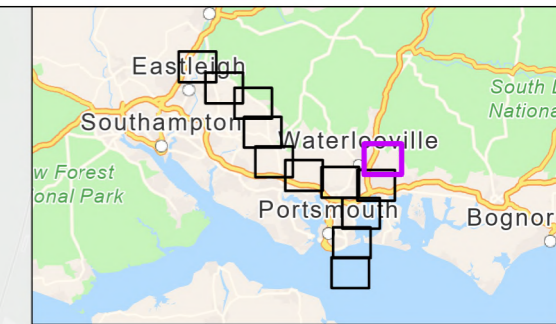
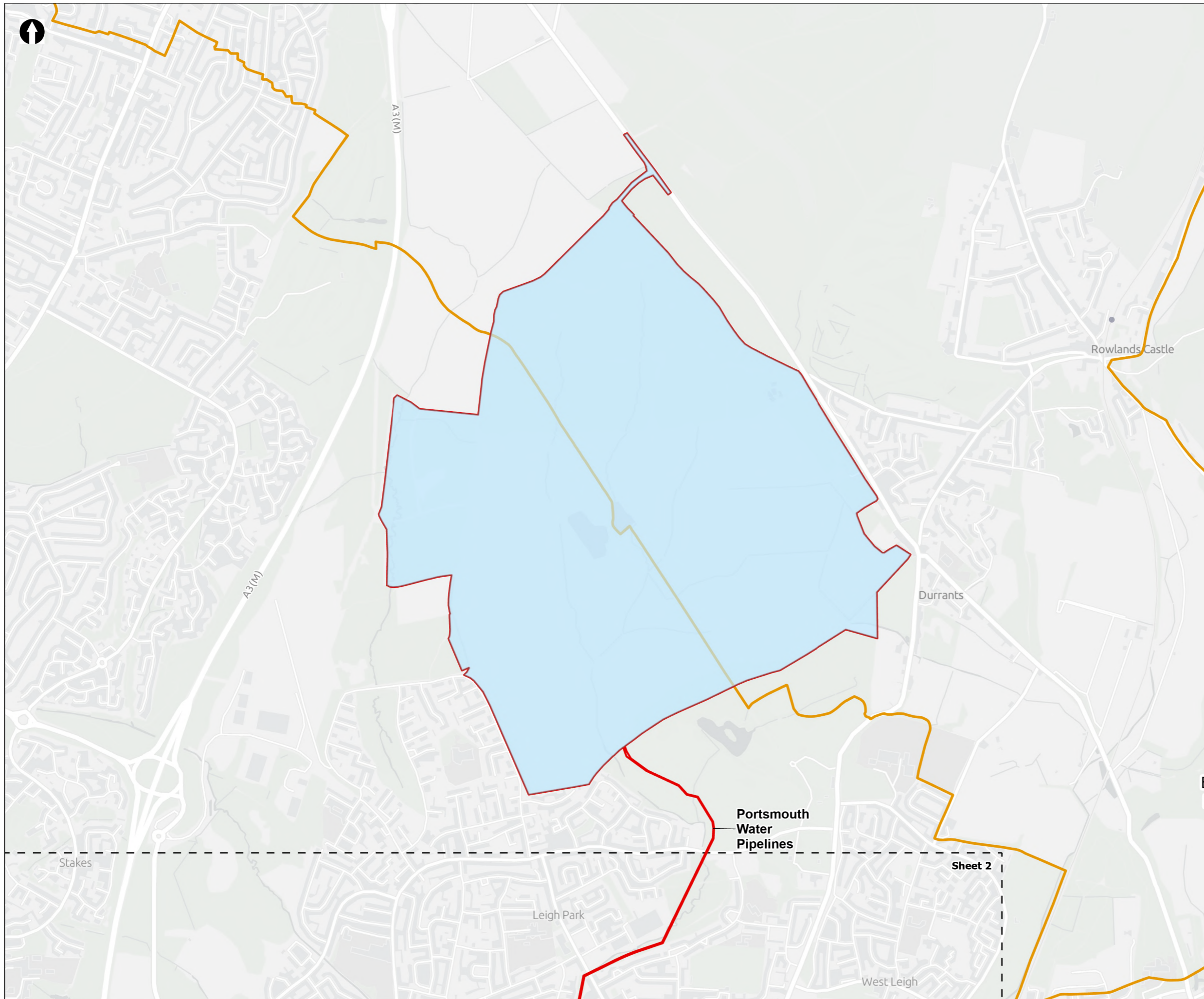
Version 0



from  
**Southern  
Water** 

The Southern Water logo consists of the words 'Southern' and 'Water' stacked vertically in a blue, sans-serif font. To the right of the word 'Water' is a graphic element consisting of three stylized, wavy blue lines representing water.





**Order Limits**  
 Sheet Extent Boxes 1:15K  
 Local planning authorities  
**Proposed Development components**  
 Havant Thicket Reservoir

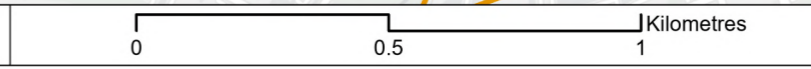
Coordinate system: British National Grid; Datum: OSGB 1936  
 Data sources: © Crown copyright and database rights 2026 Ordnance Survey 0100031673. Sources: Esri, TomTom, Garmin, FAO, NOAA, USGS, © OpenStreetMap contributors, and the GIS User Community, Contains OS data © Crown Copyright and database right 2025. Contains data from OS Zoomstack

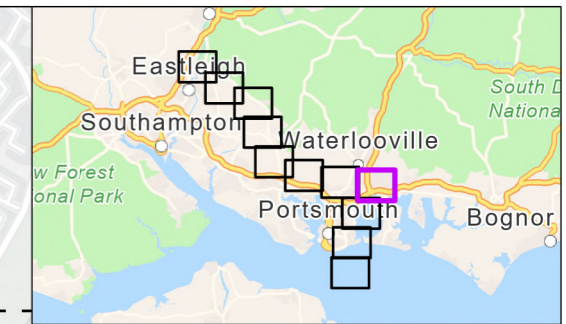
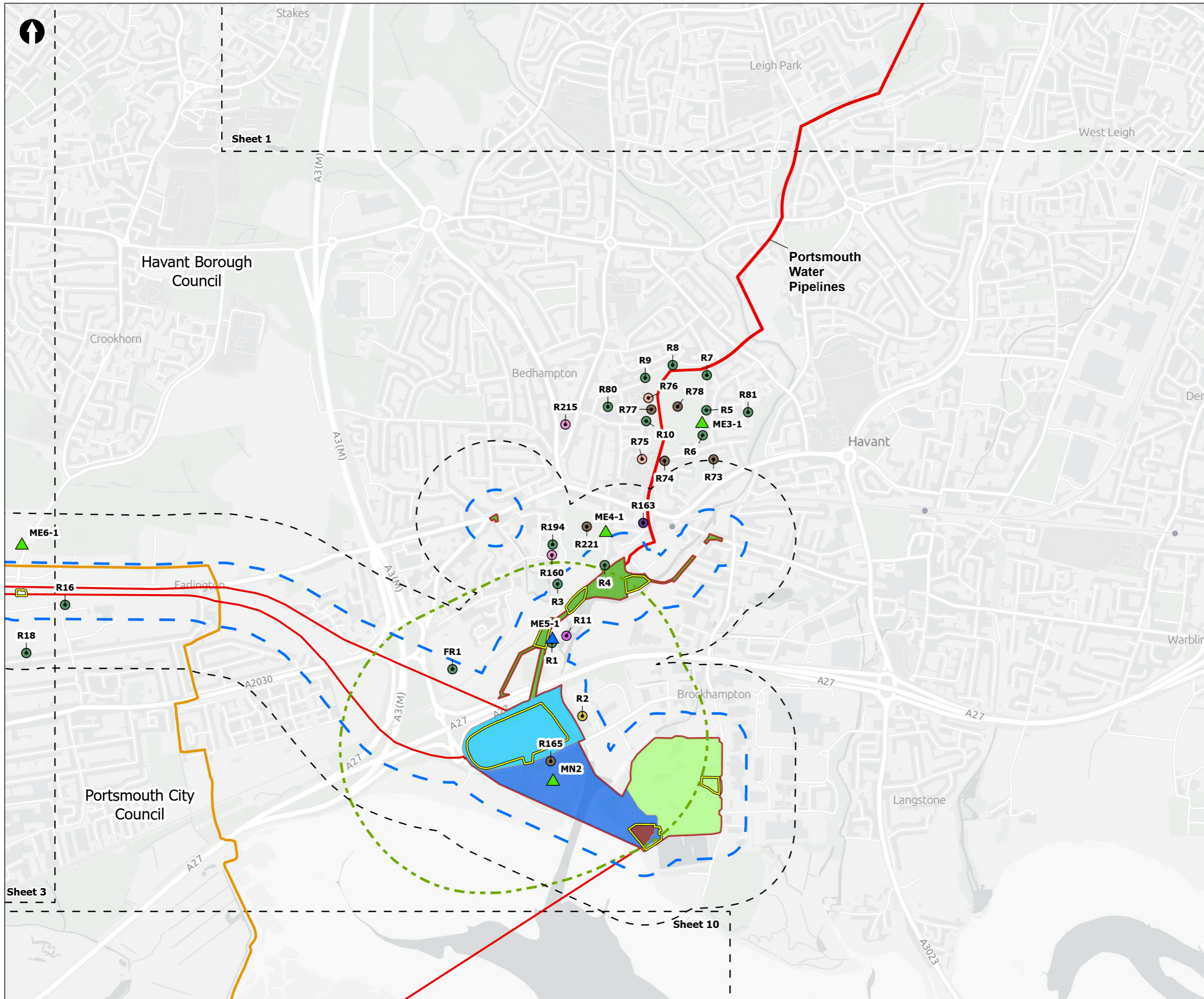
PROJECT TITLE  
 Hampshire Water Transfer and Water Recycling Project



Figure 15.1  
 Noise and vibration direct effects study areas, sensitive receptors and monitoring locations  
 Sheet 1 of 12

Drawn <b>MW</b>	GIS Checked <b>DL</b>	Checked <b>SP</b>	Approved <b>AK</b>
Scale at A3 <b>1:15,000</b>	Status <b>Final</b>	Revision <b>05</b>	Security <b>STD</b>





- Order Limits
- Sheet Extent Boxes 1:15K
- Local planning authorities
- Proposed Development components**
- Budds Farm Wastewater Treatment Works
- Limits of Deviation for Budds Farm Pumping Station
- Pipelines between the Water Recycling Plant site and Bedhampton Springs
- Water Recycling Plant site
- Pipelines between Budds Farm Wastewater Treatment Works and the Water Recycling Plant site
- Construction compounds
- Study Areas**
- Ground-Borne Vibration Study Area
- Airborne Noise Study Area
- Operational Noise Study Area
- Noise and Vibration Sensitive Receptors**
- Business park
- Community centres
- Hotel
- Open space and recreation
- Religious buildings and grounds
- Residential
- Schools and education
- Noise Monitoring Locations**
- 24-hr unattended
- Long-term unattended

Coordinate system: British National Grid; Datum: OSGB 1936  
 Data sources: © Crown copyright and database rights 2026 Ordnance Survey 0100031673. Sources: Esri, TomTom, Garmin, FAO, NOAA, USGS, © OpenStreetMap contributors, and the GIS User Community, Contains OS data © Crown Copyright and database right 2025. Contains data from OS Zoomstack

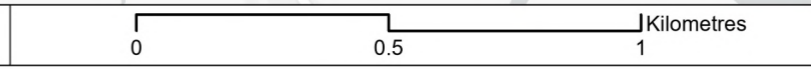
PROJECT TITLE  
 Hampshire Water Transfer and Water Recycling Project

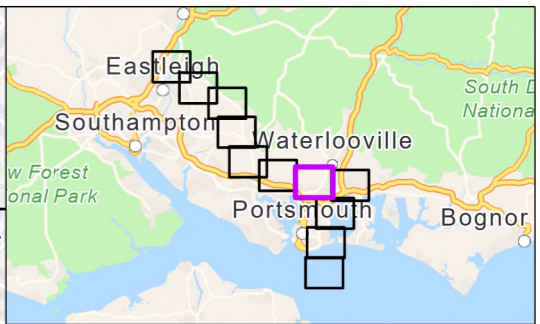
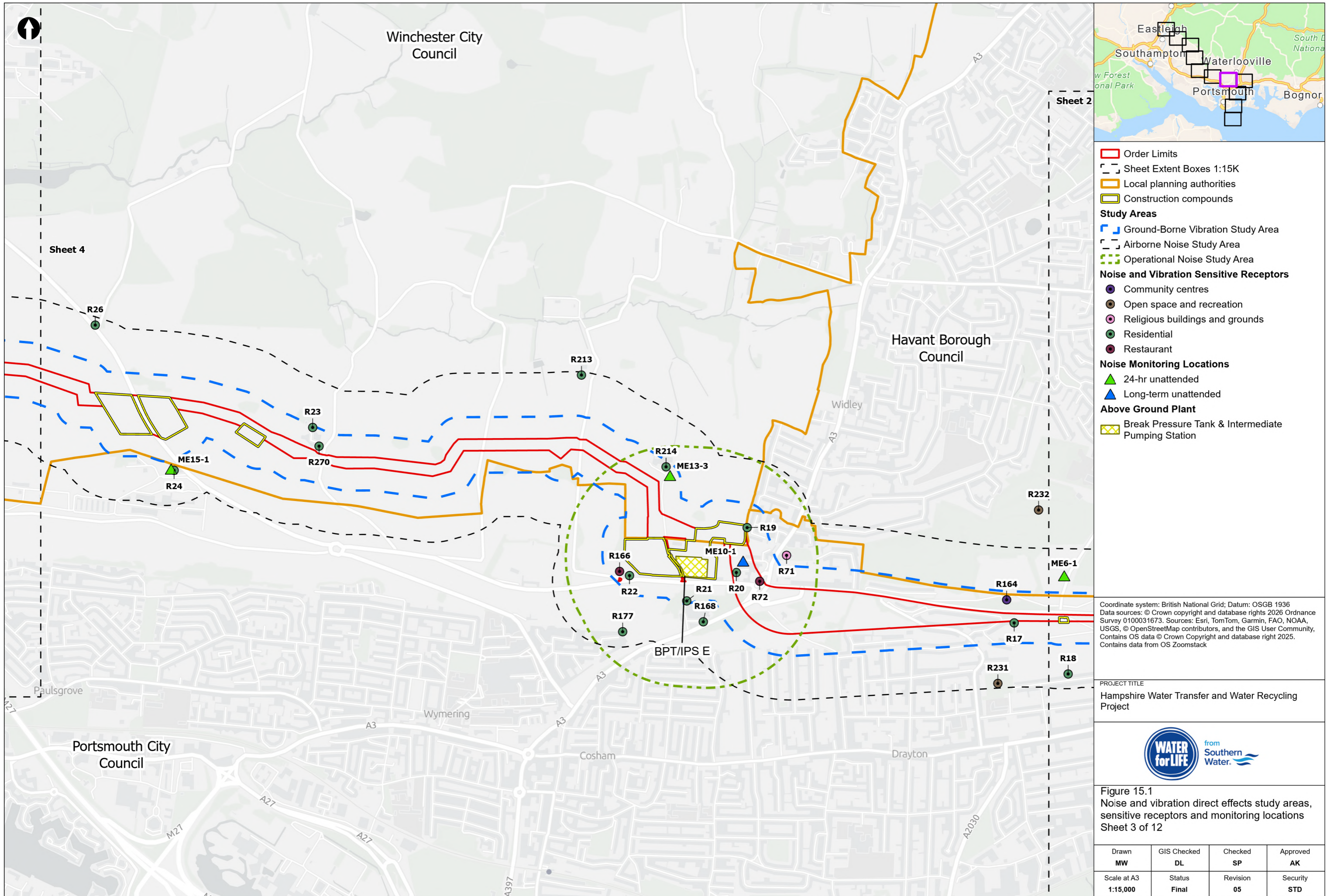


Figure 15.1  
 Noise and vibration direct effects study areas, sensitive receptors and monitoring locations  
 Sheet 2 of 12

Drawn <b>MW</b>	GIS Checked <b>DL</b>	Checked <b>SP</b>	Approved <b>AK</b>
Scale at A3 <b>1:15,000</b>	Status <b>Final</b>	Revision <b>05</b>	Security <b>STD</b>

Drawing Number  
**PC5223-RHD-ES-ZZ-D-Z-0117**





- Order Limits
- Sheet Extent Boxes 1:15K
- Local planning authorities
- Construction compounds
- Study Areas**
- Ground-Borne Vibration Study Area
- Airborne Noise Study Area
- Operational Noise Study Area
- Noise and Vibration Sensitive Receptors**
- Community centres
- Open space and recreation
- Religious buildings and grounds
- Residential
- Restaurant
- Noise Monitoring Locations**
- ▲ 24-hr unattended
- ▲ Long-term unattended
- Above Ground Plant**
- Break Pressure Tank & Intermediate Pumping Station

Coordinate system: British National Grid; Datum: OSGB 1936  
 Data sources: © Crown copyright and database rights 2026 Ordnance Survey 0100031673. Sources: Esri, TomTom, Garmin, FAO, NOAA, USGS, © OpenStreetMap contributors, and the GIS User Community, Contains OS data © Crown Copyright and database right 2025. Contains data from OS Zoomstack

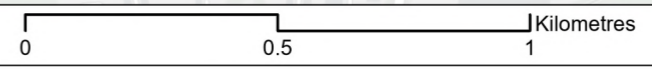
PROJECT TITLE  
 Hampshire Water Transfer and Water Recycling Project



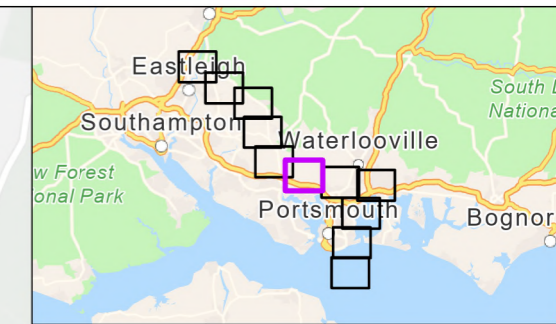
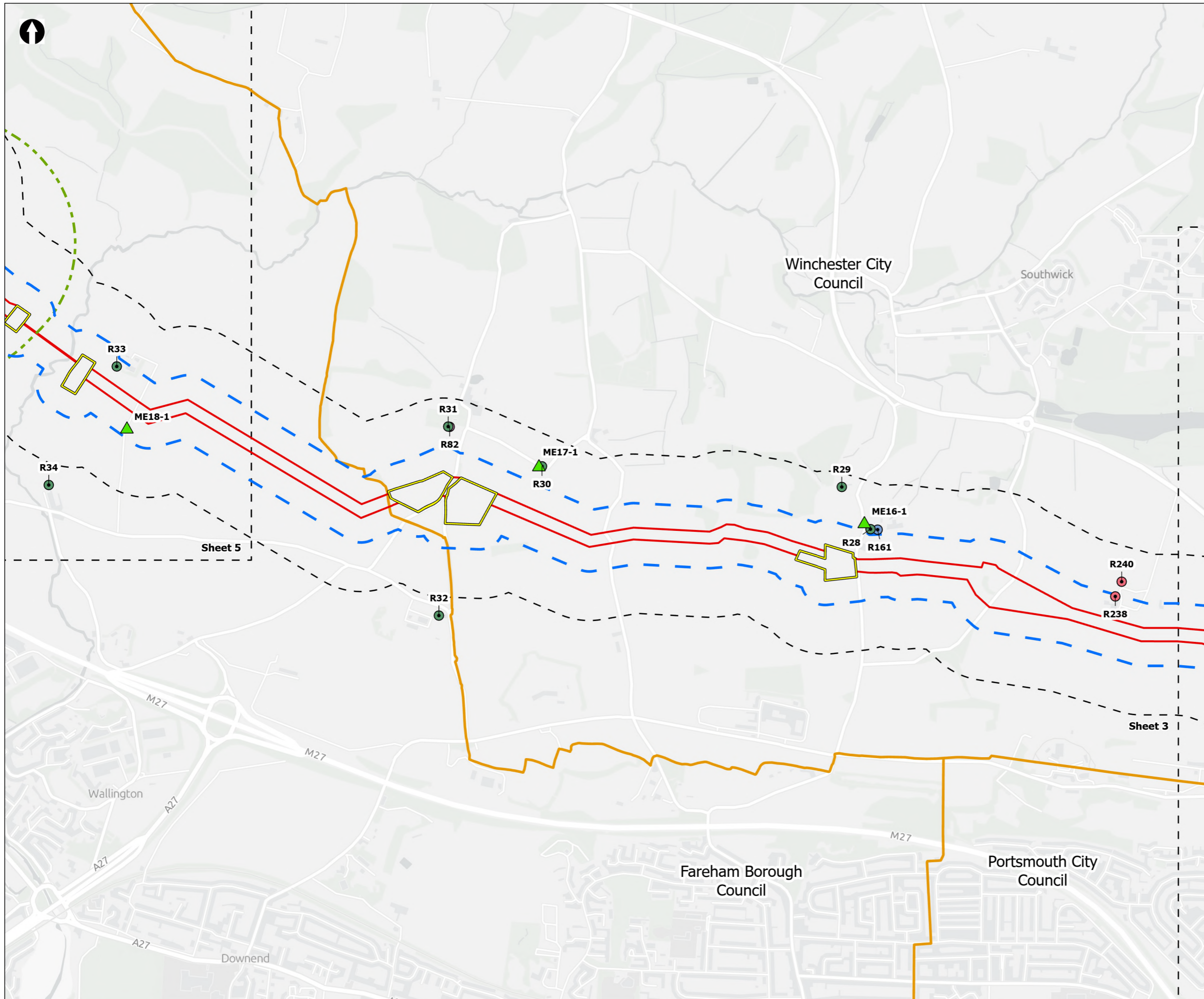
Figure 15.1  
 Noise and vibration direct effects study areas, sensitive receptors and monitoring locations  
 Sheet 3 of 12

Drawn <b>MW</b>	GIS Checked <b>DL</b>	Checked <b>SP</b>	Approved <b>AK</b>
Scale at A3 <b>1:15,000</b>	Status <b>Final</b>	Revision <b>05</b>	Security <b>STD</b>

© Southern Water 2026  
 This document is issued for the party which commissioned it and for specific purposes connected with the captioned project only. It should not be relied upon by any other party or used for any other purpose. We accept no responsibility for the consequences of this document being relied upon by any other party, or being used for any other purpose, or containing any error or omission which is due to an error or omission in data supplied to us by other parties.



Drawing Number  
**PC5223-RHD-ES-ZZ-D-Z-0117**



**Order Limits**  
 Sheet Extent Boxes 1:15K  
 Local planning authorities  
 Construction compounds

**Study Areas**  
 Ground-Borne Vibration Study Area  
 Airborne Noise Study Area  
 Operational Noise Study Area

**Noise and Vibration Sensitive Receptors**  
 Gym  
 Recording studio  
 Religious buildings and grounds  
 Residential

**Noise Monitoring Locations**  
 24-hr unattended

Coordinate system: British National Grid; Datum: OSGB 1936  
 Data sources: © Crown copyright and database rights 2026 Ordnance Survey 0100031673. Sources: Esri, TomTom, Garmin, FAO, NOAA, USGS, © OpenStreetMap contributors, and the GIS User Community, Contains OS data © Crown Copyright and database right 2025. Contains data from OS Zoomstack

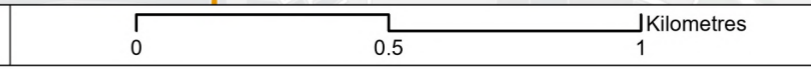
PROJECT TITLE  
 Hampshire Water Transfer and Water Recycling Project



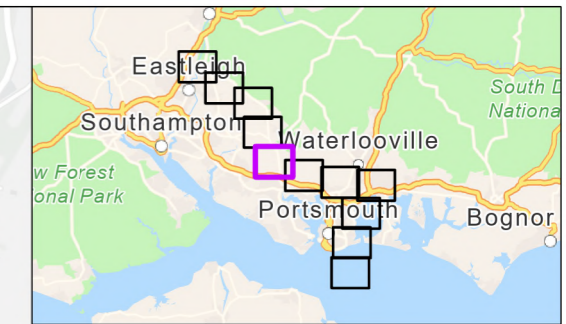
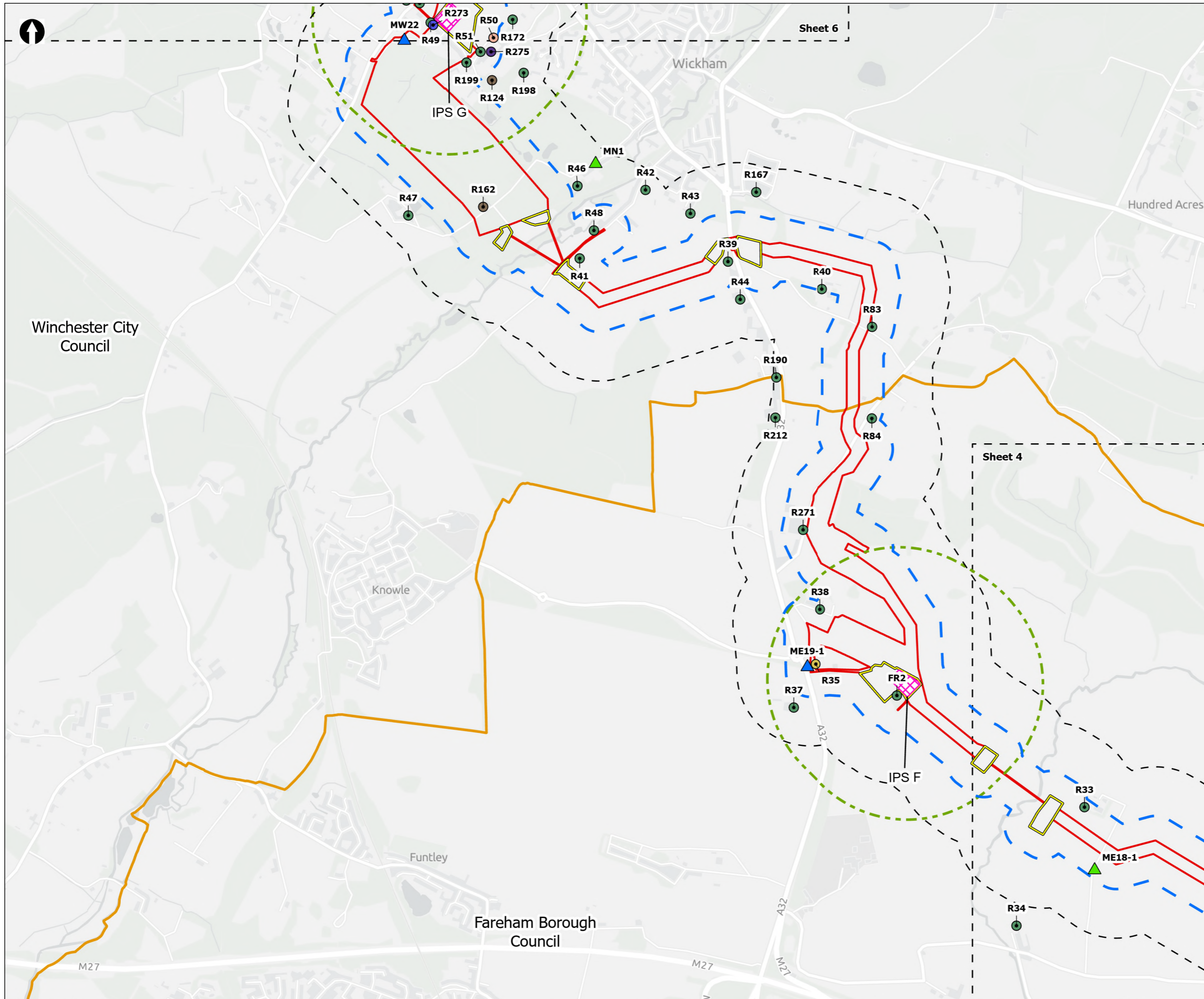
Figure 15.1  
 Noise and vibration direct effects study areas, sensitive receptors and monitoring locations  
 Sheet 4 of 12

Drawn <b>MW</b>	GIS Checked <b>DL</b>	Checked <b>SP</b>	Approved <b>AK</b>
Scale at A3 <b>1:15,000</b>	Status <b>Final</b>	Revision <b>05</b>	Security <b>STD</b>

© Southern Water 2026  
 This document is issued for the party which commissioned it and for specific purposes connected with the captioned project only. It should not be relied upon by any other party or used for any other purpose. We accept no responsibility for the consequences of this document being relied upon by any other party, or being used for any other purpose, or containing any error or omission which is due to an error or omission in data supplied to us by other parties.



Drawing Number  
**PC5223-RHD-ES-ZZ-D-Z-0117**



**Order Limits**

- Order Limits (Red line)
- Sheet Extent Boxes 1:15K (Dashed black line)
- Local planning authorities (Orange outline)
- Construction compounds (Yellow outline)

**Study Areas**

- Ground-Borne Vibration Study Area (Blue dashed line)
- Airborne Noise Study Area (Black dashed line)
- Operational Noise Study Area (Green dashed line)

**Noise and Vibration Sensitive Receptors**

- Business park (Yellow circle)
- Community centres (Purple circle)
- Open space and recreation (Green circle)
- Residential (Green circle)
- Residential caravan (Blue circle)
- Schools and education (Red circle)

**Noise Monitoring Locations**

- 24-hr unattended (Green triangle)
- Long-term unattended (Blue triangle)

**Above Ground Plant**

- Intermediate Pumping Station (Pink square with X)

Coordinate system: British National Grid; Datum: OSGB 1936  
 Data sources: © Crown copyright and database rights 2026 Ordnance Survey 0100031673. Sources: Esri, TomTom, Garmin, FAO, NOAA, USGS, © OpenStreetMap contributors, and the GIS User Community, Contains OS data © Crown Copyright and database right 2025. Contains data from OS Zoomstack

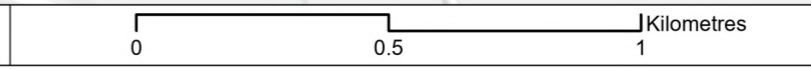
PROJECT TITLE  
 Hampshire Water Transfer and Water Recycling Project

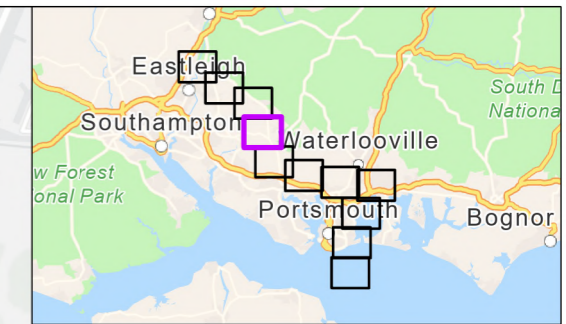
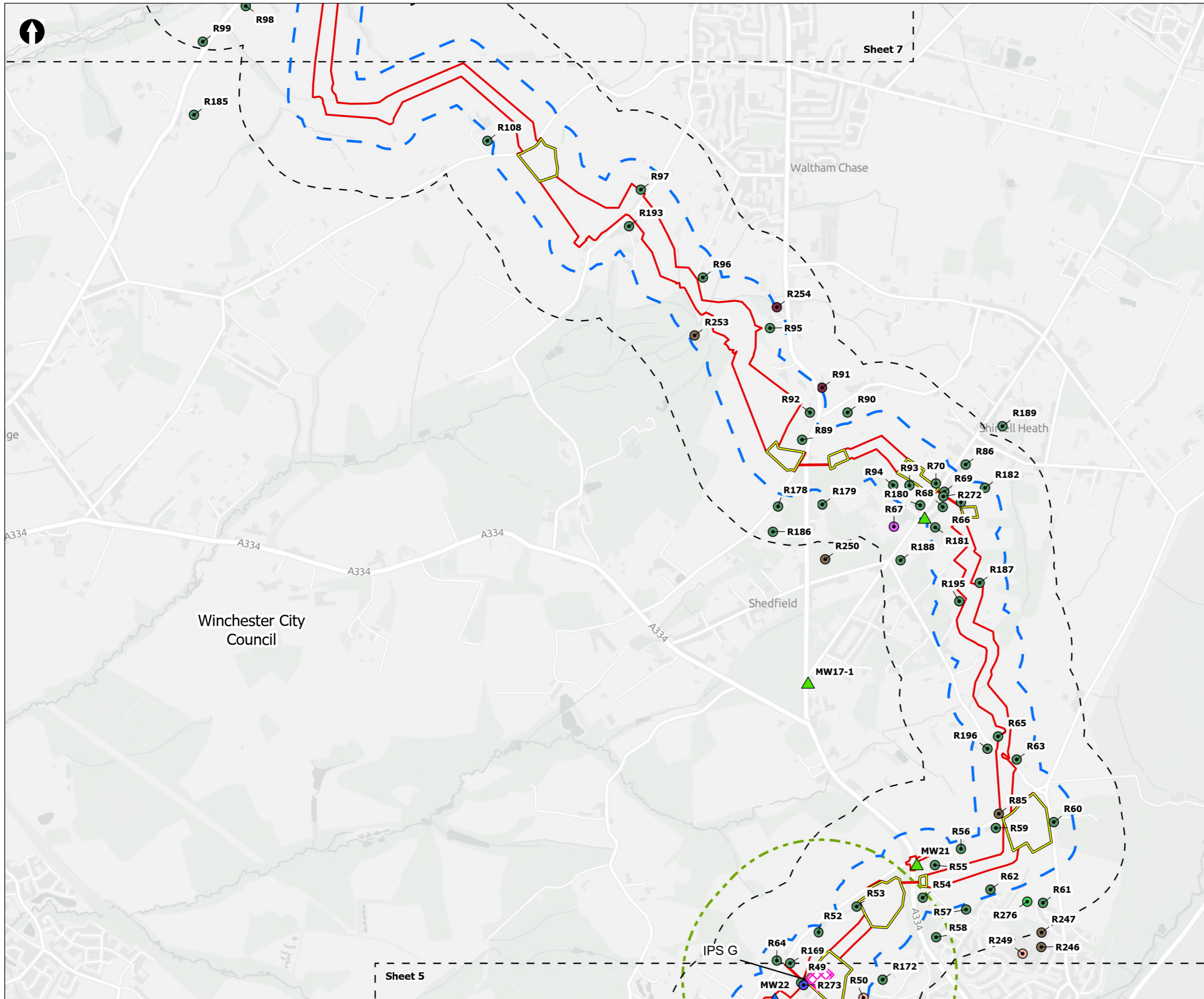


Figure 15.1  
 Noise and vibration direct effects study areas, sensitive receptors and monitoring locations  
 Sheet 5 of 12

Drawn <b>MW</b>	GIS Checked <b>DL</b>	Checked <b>SP</b>	Approved <b>AK</b>
Scale at A3 <b>1:15,000</b>	Status <b>Final</b>	Revision <b>05</b>	Security <b>STD</b>

Drawing Number  
**PC5223-RHD-ES-ZZ-D-Z-0117**





- Order Limits
- Sheet Extent Boxes 1:15K
- Local planning authorities
- Construction compounds
- Study Areas**
- Ground-Borne Vibration Study Area
- Airborne Noise Study Area
- Operational Noise Study Area
- Noise and Vibration Sensitive Receptors**
- Healthcare facility
- Hotel
- Open space and recreation
- Residential
- Residential caravan
- Restaurant
- Schools and education
- Noise Monitoring Locations**
- ▲ 24-hr unattended
- ▲ Long-term unattended
- Above Ground Plant**
- Intermediate Pumping Station

Coordinate system: British National Grid; Datum: OSGB 1936  
 Data sources: © Crown copyright and database rights 2026 Ordnance Survey 0100031673. Sources: Esri, TomTom, Garmin, FAO, NOAA, USGS, © OpenStreetMap contributors, and the GIS User Community, Contains OS data © Crown Copyright and database right 2025. Contains data from OS Zoomstack

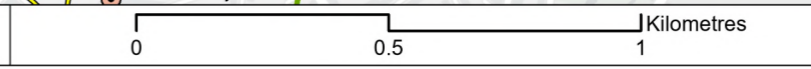
PROJECT TITLE  
 Hampshire Water Transfer and Water Recycling Project

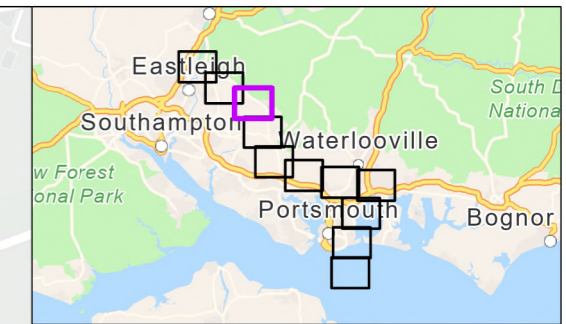
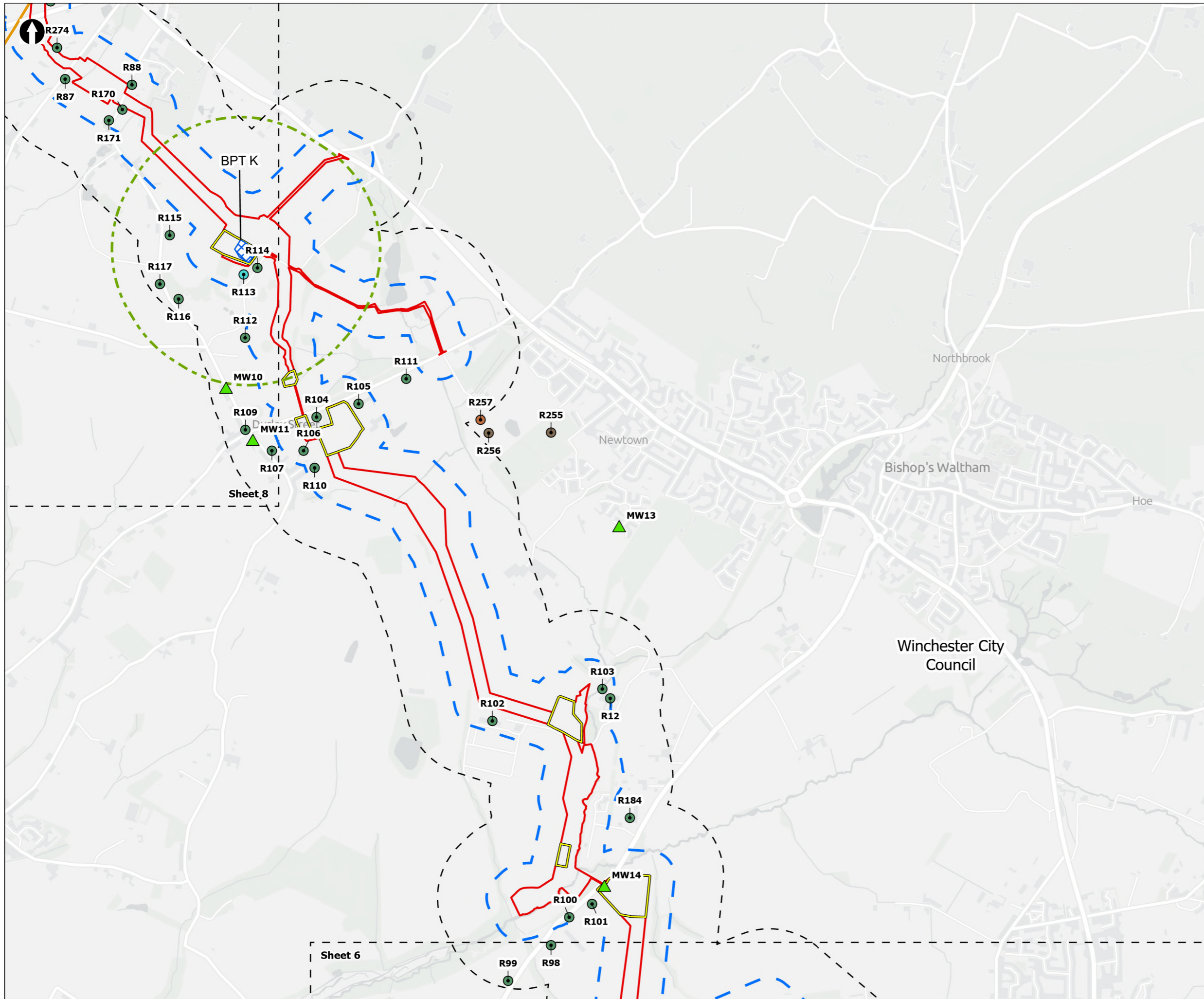


Figure 15.1  
 Noise and vibration direct effects study areas, sensitive receptors and monitoring locations  
 Sheet 6 of 12

Drawn <b>MW</b>	GIS Checked <b>DL</b>	Checked <b>SP</b>	Approved <b>AK</b>
Scale at A3 <b>1:15,000</b>	Status <b>Final</b>	Revision <b>05</b>	Security <b>STD</b>

Drawing Number  
**PC5223-RHD-ES-ZZ-D-Z-0117**





**Order Limits**  
 Sheet Extent Boxes 1:15K  
 Local planning authorities  
 Construction compounds

**Study Areas**  
 Ground-Borne Vibration Study Area  
 Airborne Noise Study Area  
 Operational Noise Study Area

**Noise and Vibration Sensitive Receptors**  
 Events venue  
 Open space and recreation  
 Residential  
 Restaurant  
 Shop

**Noise Monitoring Locations**  
 24-hr unattended

**Above Ground Plant**  
 Break Pressure Tank

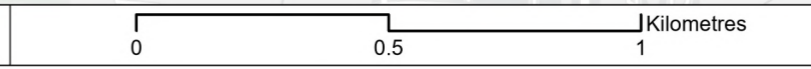
Coordinate system: British National Grid; Datum: OSGB 1936  
 Data sources: © Crown copyright and database rights 2026 Ordnance Survey 0100031673. Sources: Esri, TomTom, Garmin, FAO, NOAA, USGS, © OpenStreetMap contributors, and the GIS User Community, Contains OS data © Crown Copyright and database right 2025. Contains data from OS Zoomstack

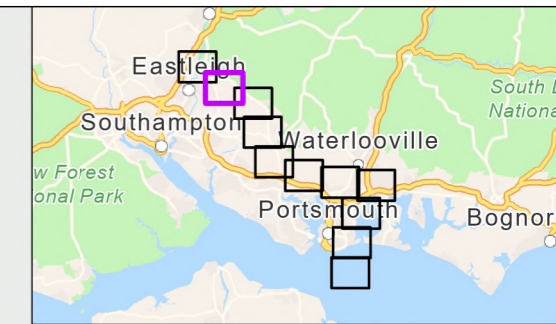
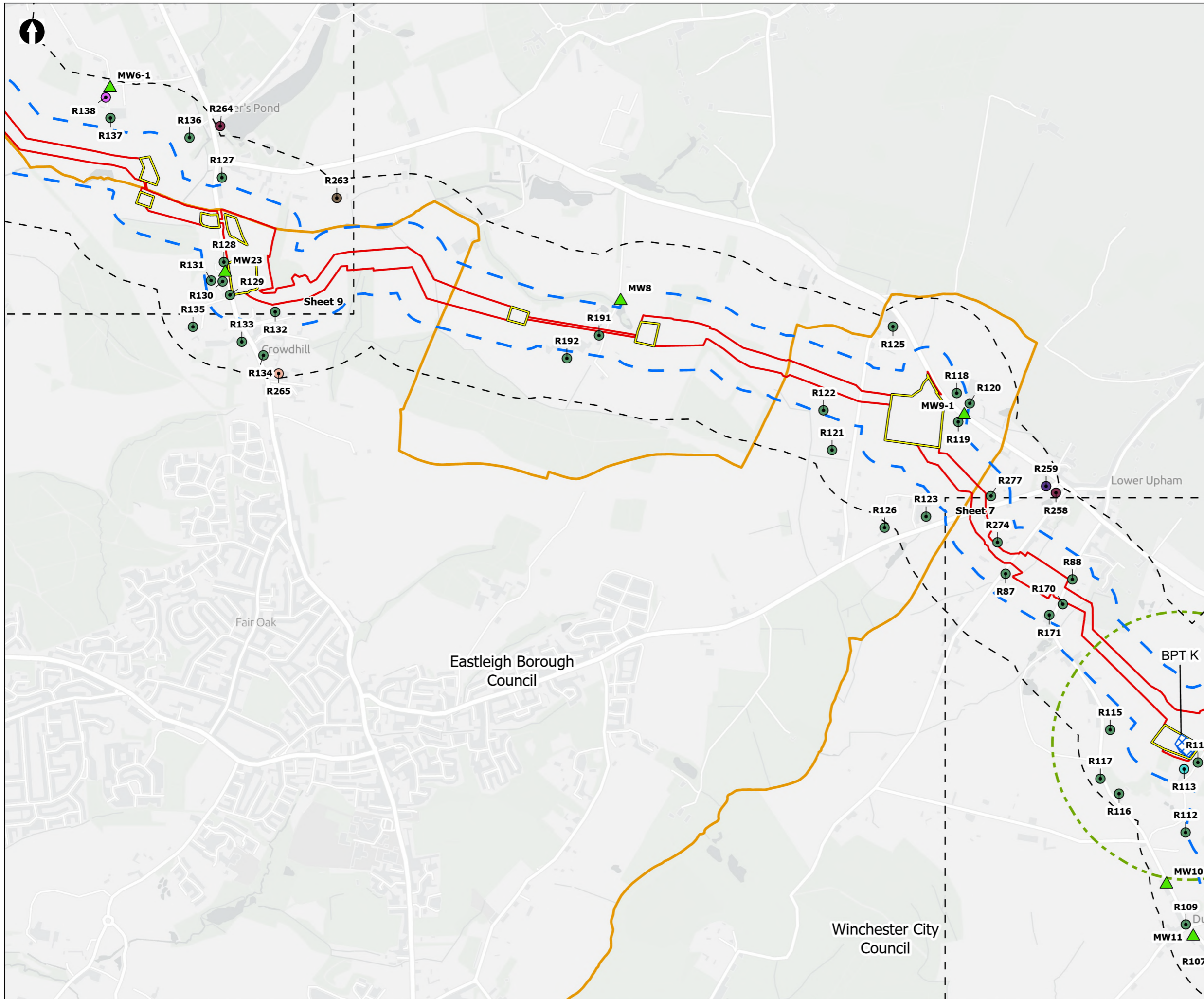
PROJECT TITLE  
 Hampshire Water Transfer and Water Recycling Project



Figure 15.1  
 Noise and vibration direct effects study areas, sensitive receptors and monitoring locations  
 Sheet 7 of 12

Drawn <b>MW</b>	GIS Checked <b>DL</b>	Checked <b>SP</b>	Approved <b>AK</b>
Scale at A3 <b>1:15,000</b>	Status <b>Final</b>	Revision <b>05</b>	Security <b>STD</b>





- Order Limits
- Sheet Extent Boxes 1:15K
- Local planning authorities
- Construction compounds
- Study Areas**
- Ground-Borne Vibration Study Area
- Airborne Noise Study Area
- Operational Noise Study Area
- Noise and Vibration Sensitive Receptors**
- Community centres
- Events venue
- Hotel
- Open space and recreation
- Residential
- Restaurant
- Schools and education
- Noise Monitoring Locations**
- ▲ 24-hr unattended
- Above Ground Plant**
- X Break Pressure Tank

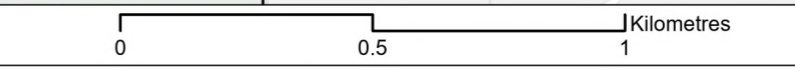
Coordinate system: British National Grid; Datum: OSGB 1936  
 Data sources: © Crown copyright and database rights 2026 Ordnance Survey 0100031673. Sources: Esri, TomTom, Garmin, FAO, NOAA, USGS, © OpenStreetMap contributors, and the GIS User Community, Contains OS data © Crown Copyright and database right 2025. Contains data from OS Zoomstack

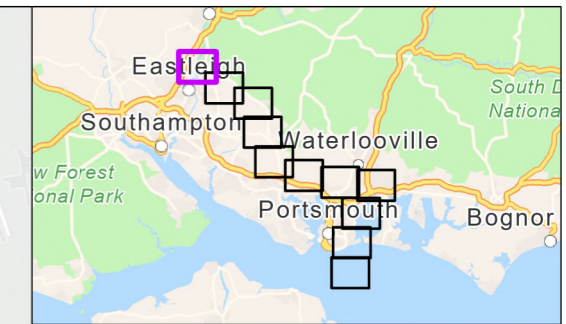
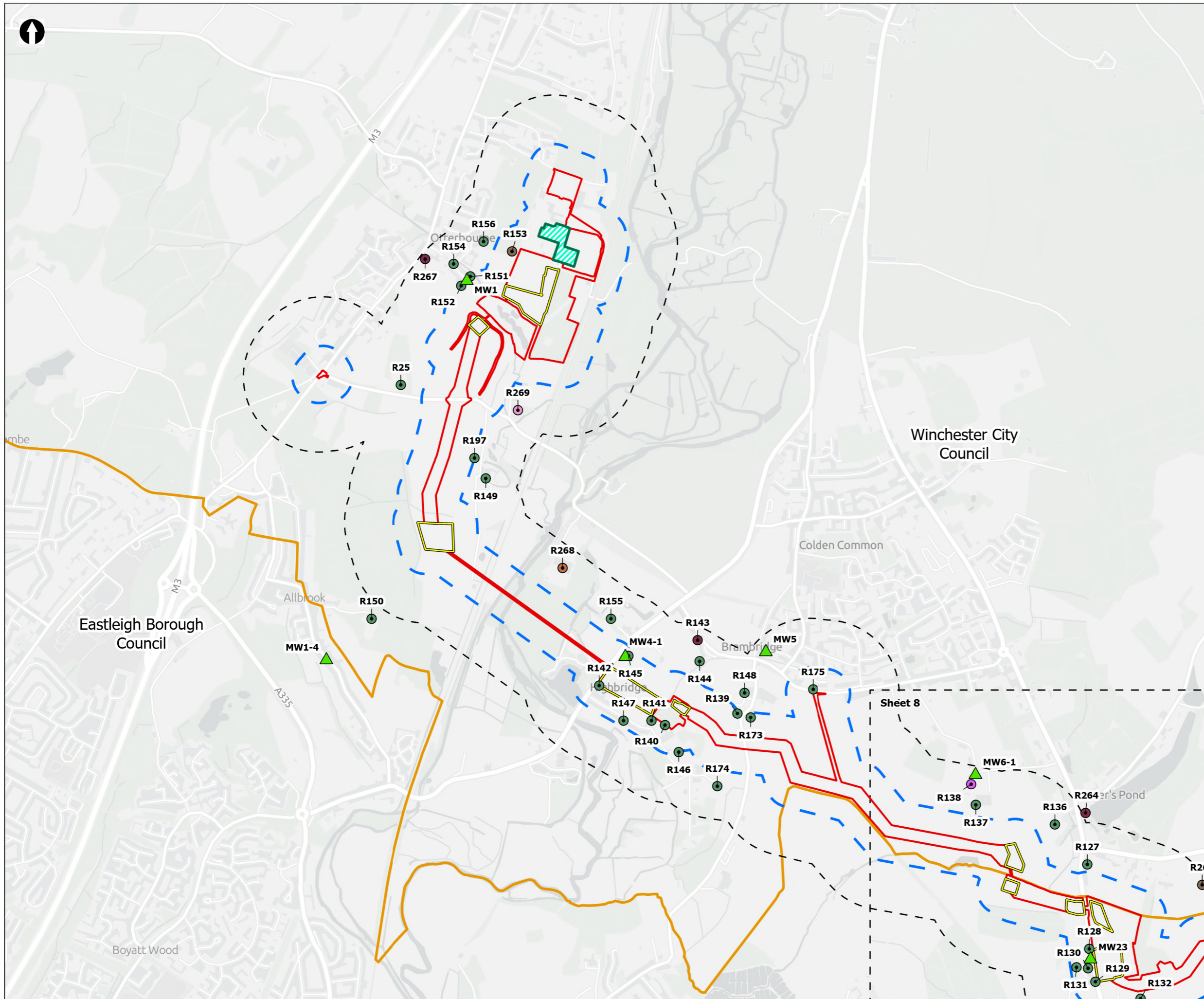
PROJECT TITLE  
 Hampshire Water Transfer and Water Recycling Project



Figure 15.1  
 Noise and vibration direct effects study areas, sensitive receptors and monitoring locations  
 Sheet 8 of 12

Drawn <b>MW</b>	GIS Checked <b>DL</b>	Checked <b>SP</b>	Approved <b>AK</b>
Scale at A3 1:15,000	Status <b>Final</b>	Revision <b>05</b>	Security <b>STD</b>





**Order Limits**  
 Sheet Extent Boxes 1:15K  
 Local planning authorities  
 Construction compounds  
 Limits of Deviation for Otterbourne INNS Treatment Plant

**Study Areas**  
 Ground-Borne Vibration Study Area  
 Airborne Noise Study Area

**Noise and Vibration Sensitive Receptors**  
 Hotel  
 Open space and recreation  
 Religious buildings and grounds  
 Residential  
 Restaurant  
 Shop

**Noise Monitoring Locations**  
 24-hr unattended

Coordinate system: British National Grid; Datum: OSGB 1936  
 Data sources: © Crown copyright and database rights 2026 Ordnance Survey 0100031673. Sources: Esri, TomTom, Garmin, FAO, NOAA, USGS, © OpenStreetMap contributors, and the GIS User Community, Contains OS data © Crown Copyright and database right 2025. Contains data from OS Zoomstack

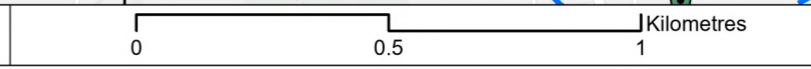
PROJECT TITLE  
 Hampshire Water Transfer and Water Recycling Project

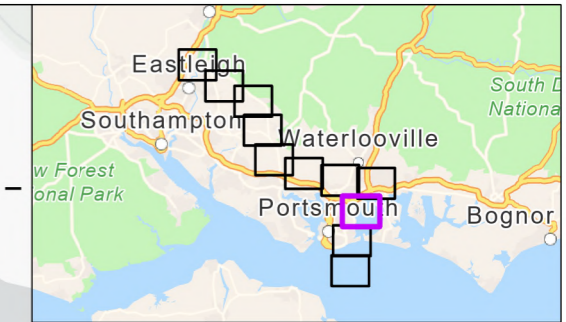
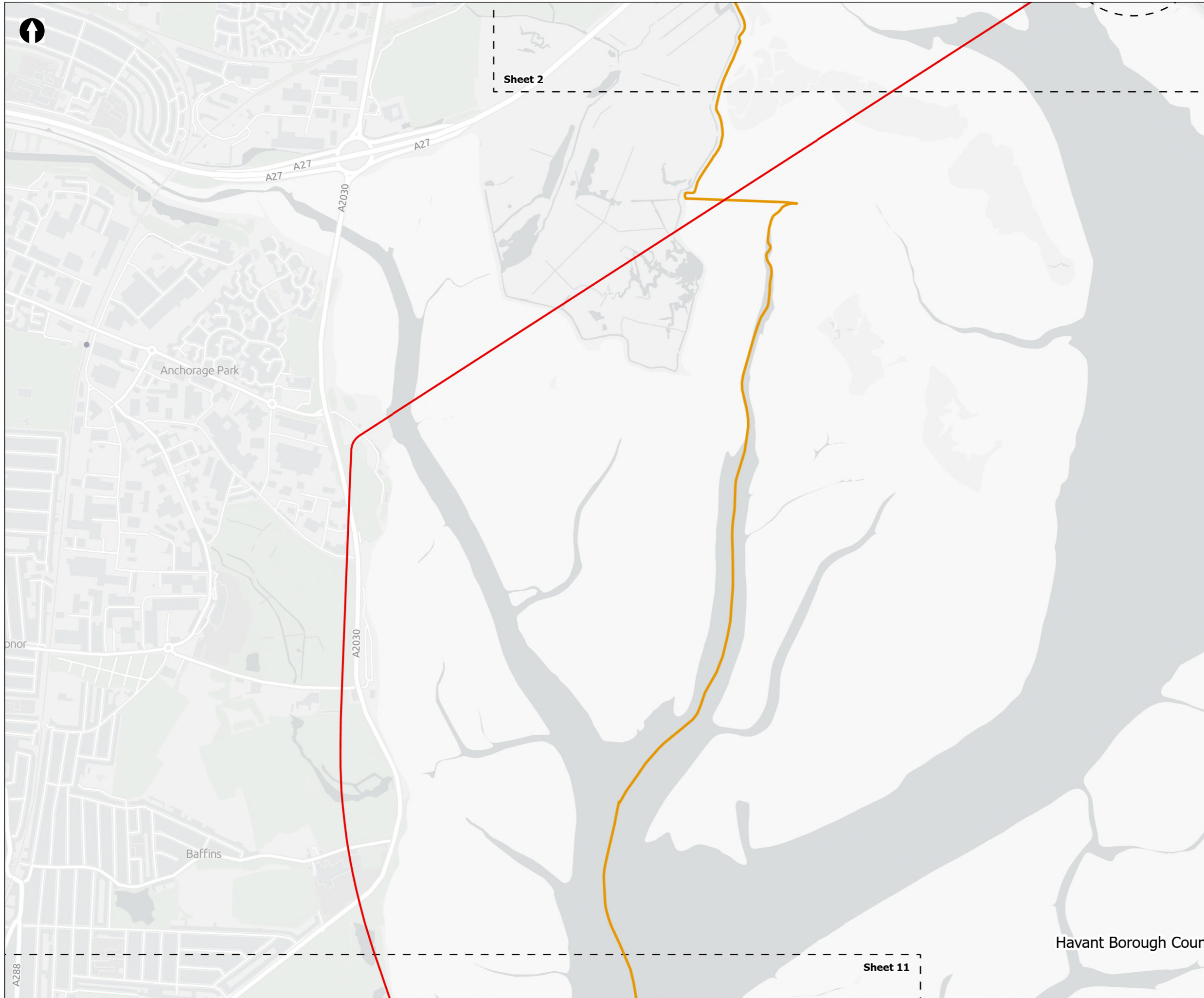


Figure 15.1  
 Noise and vibration direct effects study areas, sensitive receptors and monitoring locations  
 Sheet 9 of 12

Drawn MW	GIS Checked DL	Checked SP	Approved AK
Scale at A3 1:15,000	Status Final	Revision 05	Security STD

Drawing Number  
 PC5223-RHD-ES-ZZ-D-Z-0117





**Order Limits**  
 Order Limits

**Sheet Extent Boxes 1:15K**  
 Sheet Extent Boxes 1:15K

**Local planning authorities**  
 Local planning authorities

**Study Areas**  
 Airborne Noise Study Area

Coordinate system: British National Grid; Datum: OSGB 1936  
 Data sources: © Crown copyright and database rights 2026 Ordnance Survey 0100031673. Sources: Esri, TomTom, Garmin, FAO, NOAA, USGS, © OpenStreetMap contributors, and the GIS User Community, Contains OS data © Crown Copyright and database right 2025. Contains data from OS Zoomstack

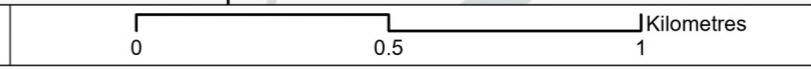
PROJECT TITLE  
 Hampshire Water Transfer and Water Recycling Project



Figure 15.1  
 Noise and vibration direct effects study areas, sensitive receptors and monitoring locations  
 Sheet 10 of 12

Drawn <b>MW</b>	GIS Checked <b>DL</b>	Checked <b>SP</b>	Approved <b>AK</b>
Scale at A3 <b>1:15,000</b>	Status <b>Final</b>	Revision <b>05</b>	Security <b>STD</b>

Drawing Number  
**PC5223-RHD-ES-ZZ-D-Z-0117**

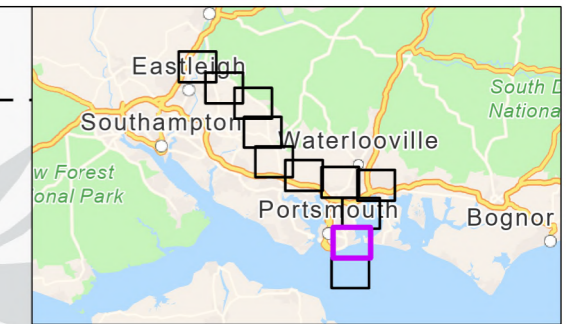
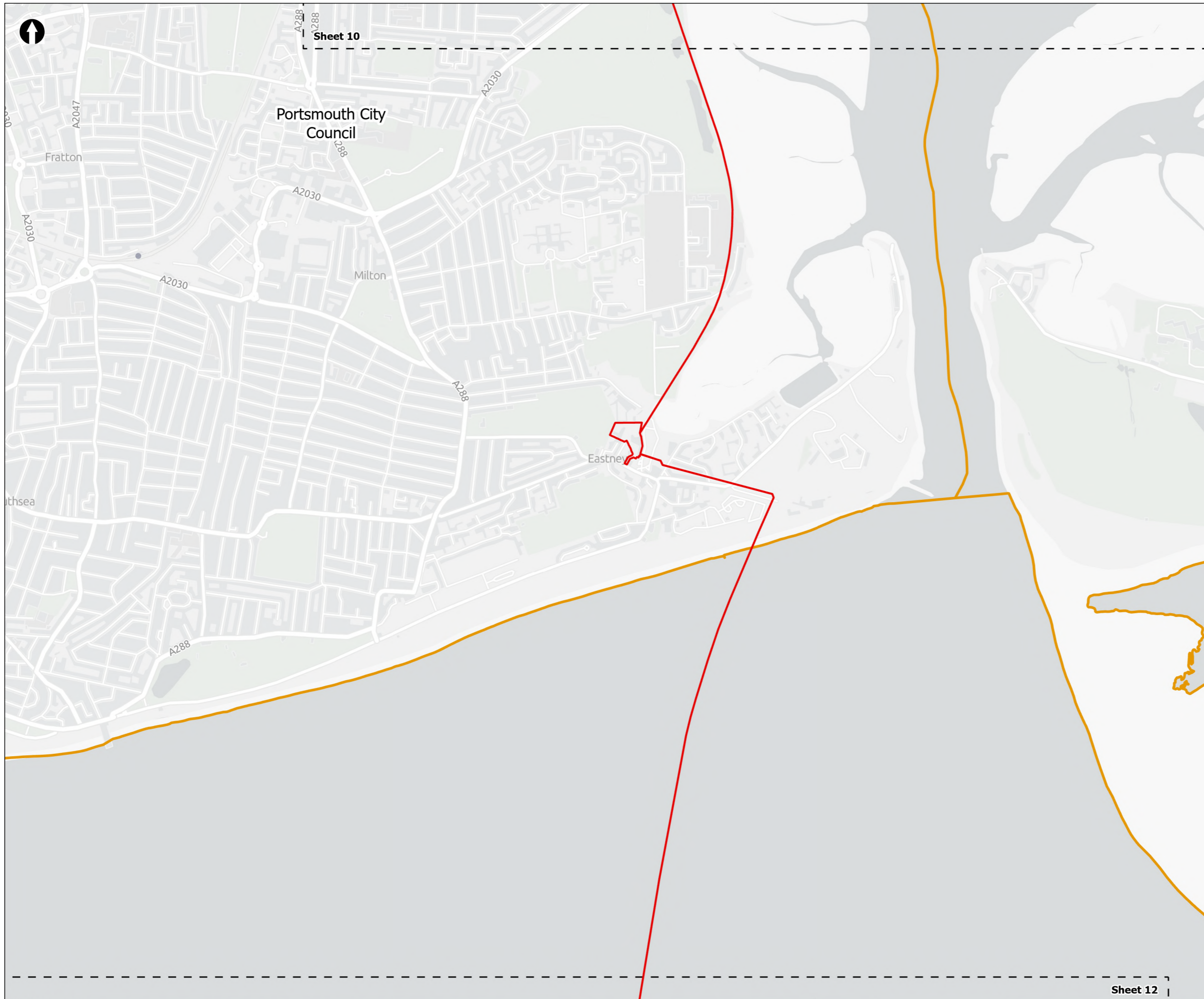


A288

Sheet 2

Sheet 11

Havant Borough Council



▭ Order Limits  
 Sheet Extent Boxes 1:15K  
 Local planning authorities

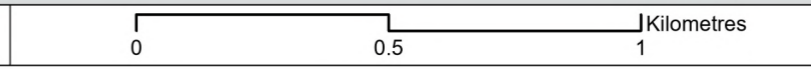
Coordinate system: British National Grid; Datum: OSGB 1936  
 Data sources: © Crown copyright and database rights 2026 Ordnance Survey 0100031673. Sources: Esri, TomTom, Garmin, FAO, NOAA, USGS, © OpenStreetMap contributors, and the GIS User Community, Contains OS data © Crown Copyright and database right 2025. Contains data from OS Zoomstack

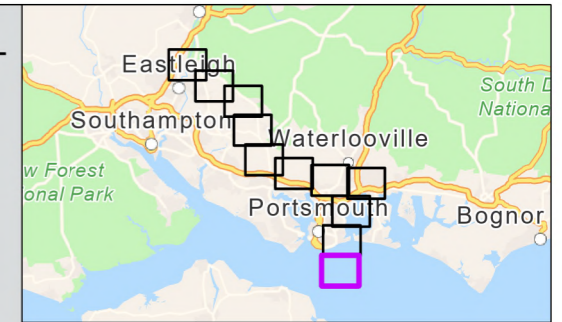
PROJECT TITLE  
 Hampshire Water Transfer and Water Recycling Project



Figure 15.1  
 Noise and vibration direct effects study areas, sensitive receptors and monitoring locations  
 Sheet 11 of 12

Drawn <b>MW</b>	GIS Checked <b>DL</b>	Checked <b>SP</b>	Approved <b>AK</b>
Scale at A3 <b>1:15,000</b>	Status <b>Final</b>	Revision <b>05</b>	Security <b>STD</b>





Order Limits  
Sheet Extent Boxes 1:15K

Coordinate system: British National Grid; Datum: OSGB 1936  
Data sources: © Crown copyright and database rights 2026 Ordnance Survey 0100031673. Sources: Esri, TomTom, Garmin, FAO, NOAA, USGS, © OpenStreetMap contributors, and the GIS User Community, Contains OS data © Crown Copyright and database right 2025. Contains data from OS Zoomstack

PROJECT TITLE  
Hampshire Water Transfer and Water Recycling Project



Figure 15.1  
Noise and vibration direct effects study areas, sensitive receptors and monitoring locations  
Sheet 12 of 12

Drawn <b>MW</b>	GIS Checked <b>DL</b>	Checked <b>SP</b>	Approved <b>AK</b>
Scale at A3 <b>1:15,000</b>	Status <b>Final</b>	Revision <b>05</b>	Security <b>STD</b>

Drawing Number  
**PC5223-RHD-ES-ZZ-D-Z-0117**

